



CESAB R300 Series

Reach Trucks 48V



Intelligent, dynamic, and hard working. The new CESAB R300

CESAB are proud to introduce a range of advanced reach trucks, intelligently designed to deliver maximum productivity. Their exceptional features, driving characteristics and safety will push the boundaries of your material handling operation.

From 1.4 to 2.5 tonnes

With load capacities ranging from 1400 to 2500 kg, operating lift heights up to 13000 mm and powered by energy efficient AC drive motors, the CESAB R300 range is a culmination of years of development and represents one of the most advanced reach trucks in the market.

The CESAB R300 Series fits all your needs:

- Load capacities from 1.4 to 2.5 tonnes
- Superior all-round visibility for the driver
- Fully adjustable workspace, adaptable to any morphology
- 360° steering for smooth, fast and save material handling
- Optimal Truck Performance: safe use of the full truck potential
- Transitional Lift Control for shockless and fastest lifting and lowering
- Intelligent Mast Design for best visibility and safety
- Digital colour display, an innovative new man-machine interface



IMD – Leading Mast Technology





Contents

4

Comfort is higher productivity

A new workspace built around the operator

5

The mast masters

High residual capacities, better stability, higher speeds, a whole new mast generation

6

Next level communication

New, innovative man-machine interface

8

Maximum performance, maximum safety

Optimised Truck Performance, the driver's guardian angel

9

Build your own CESAB R300

Adapt the truck perfectly to your application and needs

10

The complete package

Unrivalled service and support

11

The complete range

Model range and main specifications

12

Contact

Comfort is higher productivity

Ease of operation in every aspect

From a low step height, a slim foldable steering column, an adjustable footplate to a fully adjustable seat and command console, every single part of the workspace was developed with the driver in mind.



Every single part in the cockpit was reviewed to optimise ergonomics and driver comfort.

The new driver seat is fully adjustable up to the angle and the length of the seat cushion.

For better durability, the new long-life fabric is more resistant and can be changed easily. The left corner, heavily stressed every time the driver enters or leaves the CESAB R300, is reinforced with tough leather.

An optional air suspended version is available for even more driver comfort.

The driver's safety is assured by the optional orange coloured interlocking seatbelt. He must be seated and buckle-up before the truck is released for work.

Improved steering

The new steering column has a lower profile to create more space for the driver's knees. It also has better palm support to avoid fatigue.

Software wise, the system has a higher resolution for more precise manoeuvring and faster response while turning the wheel.

Overall, the driver will discover a more responsive and agile CESAB R300.



A new mast generation

For best in class residual capacities

CESAB has completely reviewed its mast design; higher residual capacities, better stability, lower closed heights, improved visibility, not one single detail escaped the attention of the CESAB engineers.

Transitional Lift Control (TLC) – faster and smoother lifting

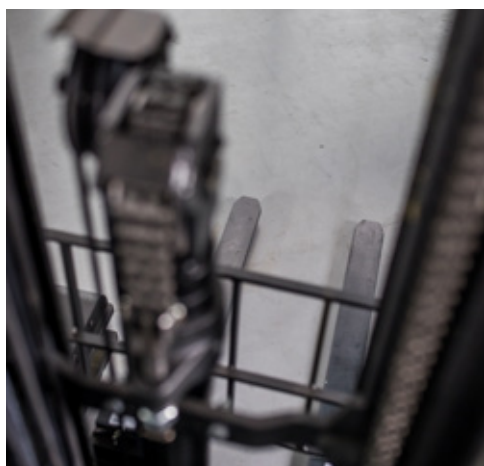


One of the main features of this new generation masts is the Transition Lift Control. During lifting and lowering of the mast, the free lift and main lift move simultaneously and allow a smooth and shockless transition. This also allows much faster lifting and lowering as the mast moves in one linear stroke.

Besides the higher productivity, the driver benefits of a gain of comfort as no shocks are transferred to the chassis.

Clear-view mast and fork carriage

The open design of the new R300 masts allows a perfect view on the load and the forks, even at eye-height.



Next level communication

Revolutionary man – machine interface

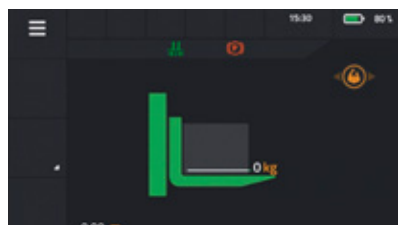


Mini-lever version (fingertip)

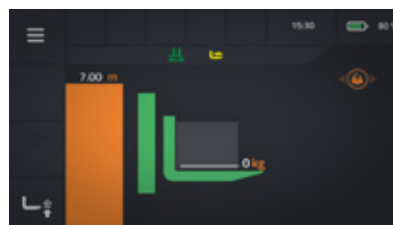


Multifunction joystick version

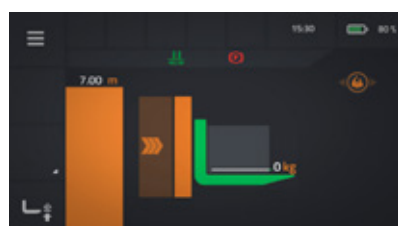
A large, full colour touch screen connects the driver to the new CESAB R300 reach truck. Besides personalisation of the truck characteristics, the display informs the driver continuously about the load handling. An optional overload warning offers additional safety and prevents accidents.



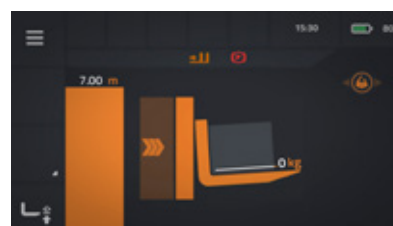
Mast, forks, and side shift in neutral position



Forks lifted to 7.00m lift height



Mast reached out

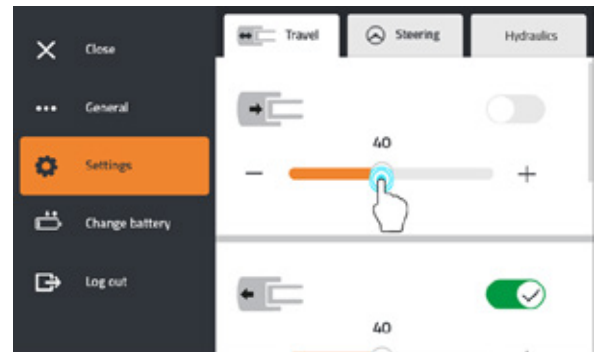


Forks tilted and shifted

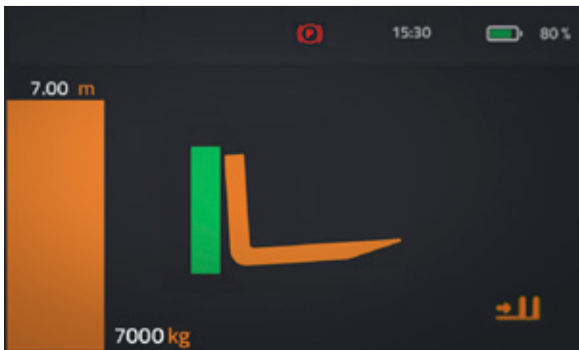
An intuitive and easy menu allows the driver to adjust the behaviour of the truck to his needs.

Several menu tabs are available, and the selected item can be adjusted through sliders or, for more precise adjustment, through “+” and “-” buttons.

Once the desired value found, the driver confirms the setting and he is ready to roll.



In addition to the main display, two more load indicators are available as options:



Load Info Display (LID)

Positioned just under the overhead guard, at eye height, this display repeats the load information as it is shown on the main display.

With the LID, the driver can constantly keep an eye on his work while from time to time check the position of load.

The LID is purely visual and has no touch functions.

Camera monitor:

As an extension of the Load Info Display, the optional camera monitor adds the view on the forks or the load by a camera mounted on the inside of the forks.

Additionally, the load information from the main display is repeated on the right side of the screen.

As the LID, the camera option is visual only.



Maximum performance

Linked to maximum safety

The CESAB R300 feature Optimised Truck Performance (OTP) as standard. OTP is the guardian angel of your driver as it allows to use the full potential of the truck in a safe and efficient way.

Optimised Truck Performance regroups three different features:



- **Optimised corner control**

The optimised corner control automatically adjusts the drive speed. It constantly measures the steering angle, the higher the steering angle, the lower the speed. Out of the corner, the speed automatically increases when the steering angle decreases.

This way the driver can corner as fast as possible while his security while his security is fully assured.

- **Optimised reach control**

Mast sway can be critical, especially at high lift heights. The CESAB engineers didn't try to damp or reduce it, they developed a way to prevent it!

Depending on the weight of the load and the lift height, the CESAB R300 automatically adjusts the reach speed.

- **Optimised speed control with reached out mast**

Again, depending of the load weight and the lift height, the truck adapts the drive speed to prevent mast sway.



- **360° Steering**

360° steering enables smooth, continuous, and fast manoeuvring. The travel direction can be changed in a continuous movement without speed reduction or stops. The overall handling speed is faster than with conventional 180° steering.

Besides the gain in productivity, the 360° steering also means less stress for the driver's arms, wrists and shoulders.

Make the CESAB R300 yours

With the many useful options

We try to produce not only the best reach truck in the market but also the most suitable. Still, some applications need special adaptation and for that we have a multitude of options available.

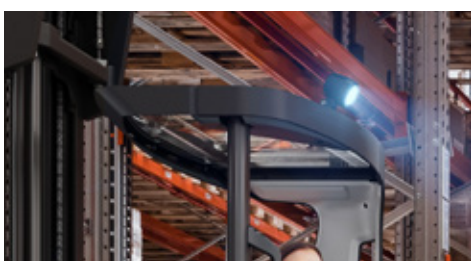


Fork positioning laser

As an option, CESAB offers a fork position laser, a green cross displayed on the racking or pallet for very accurate positioning of the forks.

Transparent overhead guard

The CESAB customer can choose a transparent overhead guard to optimise visibility even more. The window is made out of Hammerglass®, the new generation of unbreakable glass, 300 times stronger than ordinary glass. More than strong enough to assure the driver's safety.



See and be seen

Blue-spot warning lights in front or back warn surrounding traffic or pedestrians of the arrival of the truck. The beam is projected on the floor at distance and can be seen way before the truck arrives.

Dedicated cold store versions

The CESAB R300 can be prepared for cold store use with temperatures as low as -35°C. With or without cabin, both versions are available. In case of a cabin, heaters, heated windows, fans and intercom can be added.



Bluetooth speaker

As the CESAB R300 has a USB port for charging mobile phones, we also propose a Bluetooth speaker as option.



CESAB R300 Reach trucks

The complete package

CESAB's commitment to creating superior products is matched by its drive to deliver unrivalled service and support. Every CESAB customer benefits from a nationwide network of local dealerships.

Your local CESAB dealer provides a personalised, local service tailored to the specific requirements of your business.

They will advise on the best choice of equipment to meet your materials handling needs, and on the many options for tailoring your reach truck to the unique demands of your working environment.

Buying a CESAB reach truck is only the beginning of the support from your nearest dealer, with experienced and fully qualified service engineers only a local call away.

The on-board diagnostics system and easy access design of the R300 range makes servicing quick and easy.



Our service engineers carry all major service parts in their vans, ensuring minimal disruption to your business.

At CESAB we believe we offer our customers a complete package of the best equipment and the best support. To experience it for yourself call your local CESAB dealership today.

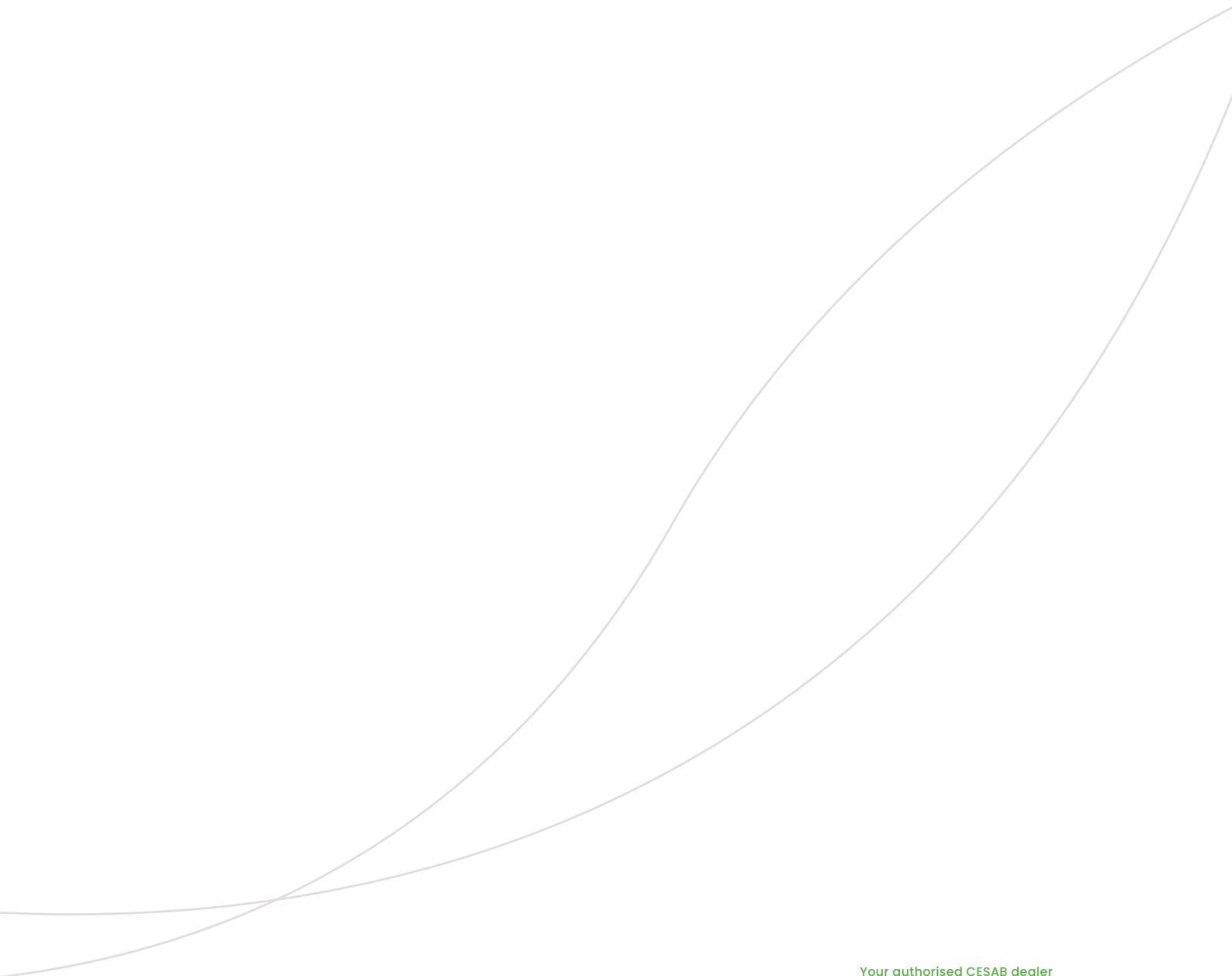
CESAB R300 Reach trucks

A complete range

CESAB R300 Reach Truck Range



MODEL		CESAB R314	CESAB R316	CESAB R318	CESAB R320	CESAB R325
Nominal Capacity	kg	1400	1600	1800	2000	2500
Load Centre	mm	600	600	600	600	600
Available Mast Types	Triplex Full Free Lift					
Max. Lift Height	mm	11000	11000	13000	13000	13000
Travel Speed with/without load	km/h	10,3/11,0	10,0/11,0	11,0/11,0	11,0/11,0	11,0/11,0
Lifting Speed (Standard) with/without load	m/s	0,38/0,68	0,36/0,68	---	---	---
Lifting Speed (High Speed) with/without load	m/s	0,57/0,92	0,52/0,92	0,46/0,68	0,43/0,68	0,37/0,64
Lowering Speed with/without load	m/s	0,55/0,59	0,55/0,59	0,55/0,60	0,55/0,60	0,53/0,58
Reach Speed with/without load	m/s	0,20/0,28	0,20/0,28	0,20/0,28	0,20/0,28	0,20/0,28
Turning Radius (Wa)	mm	1573	1657	1717	1777	1837
Drive Motor	kW	9,0	9,0	10,5	10,5	10,5
Lift Motor (Standard)	kW	11,0	11,0	---	---	---
Lift Motor (High Speed)		15,0	15,0	15,0	15,0	15,0



Your authorised CESAB dealer

Pictures may show optional equipment or accessories not included in the standard execution of the truck.

The data in this document was determined based on our standard testing conditions.
Operating performance may vary depending on the actual specification and condition of the truck
as well as the condition of the operating area.

Availability and specifications are determined regionally and are subject to change without notice.
Please consult your authorised CESAB dealership for further details. R300-2_EN_2021 / Ucan V03
- Copyright CESAB Material Handling Europe.